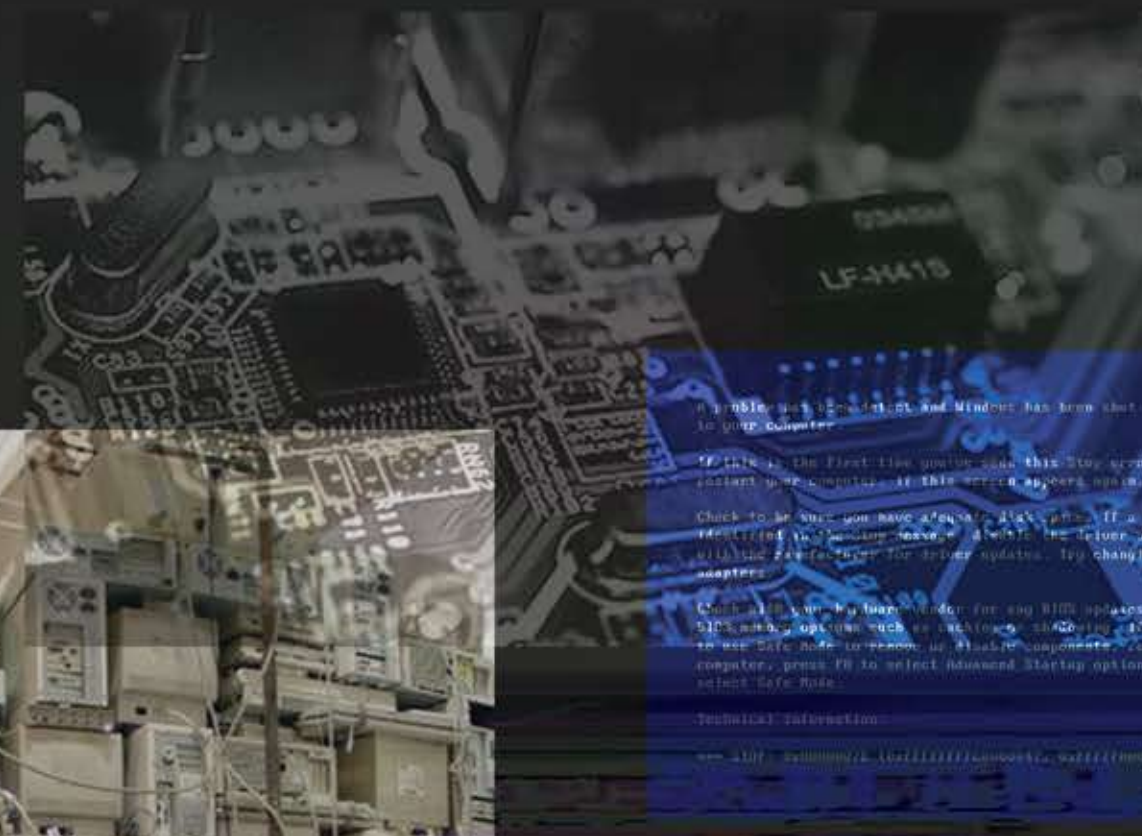
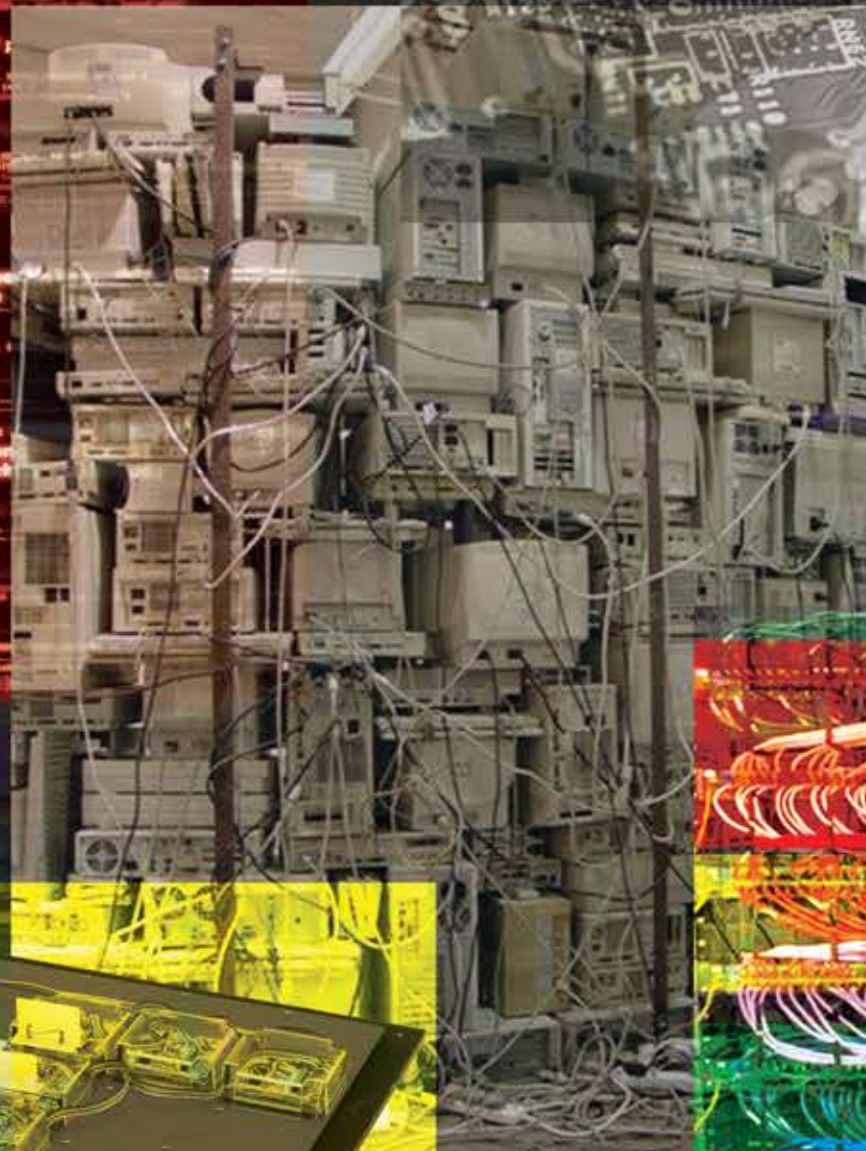


```
void Cell::CL_printCellRow(int whichCellRow) {
    // print penValue
    for (int i = SODOKU_MINIMUM; i <= SODOKU_ROOT;
         i++) {
        if (SODOKU_MAXIMUM > 9) { cout << " " << whichCellRow << endl; }
        else { cout << whichCellRow; }
    }
    // print pencilValues
    for (int whichPencilValue = SODOKU_MINIMUM;
         whichPencilValue <= SODOKU_MAXIMUM; whichPencilValue++) {
        cout << " " << whichPencilValue << endl;
    }
}

void Cell::CL_print() {
    // penValue
    for (int whichPenValue = SODOKU_MINIMUM;
         whichPenValue <= SODOKU_MAXIMUM; whichPenValue++) {
        cout << " " << whichPenValue << endl;
    }
    // pencilValue
    for (int whichPencilValue = SODOKU_MINIMUM;
         whichPencilValue <= SODOKU_MAXIMUM; whichPencilValue++) {
        cout << " " << whichPencilValue << endl;
    }
}

// PENVALUE
// PENCILVALUE
// FUNCTION
// CL_printPencilValues(int)
```



A problem was detected and Windows has been shut down to prevent damage to your computer.

If this is the first time you've seen this Stop error screen, restart your computer. If this screen appears again, follow these steps:

Check to be sure you have adequate disk space. If a driver is identified in Stop error message, disable the driver or check with the manufacturer for driver updates. Try changing video adapters.

Check to be sure you have adequate RAM. Disable BIOS caching options such as cache on writing. If you need to use Safe Mode to remove or disable components, restart your computer, press F8 to select Advanced Startup options, and then select Safe Mode.

Technical information:

*** STOP: 0x0000007E (0x0000000000000000, 0x0000000000000000) ***

